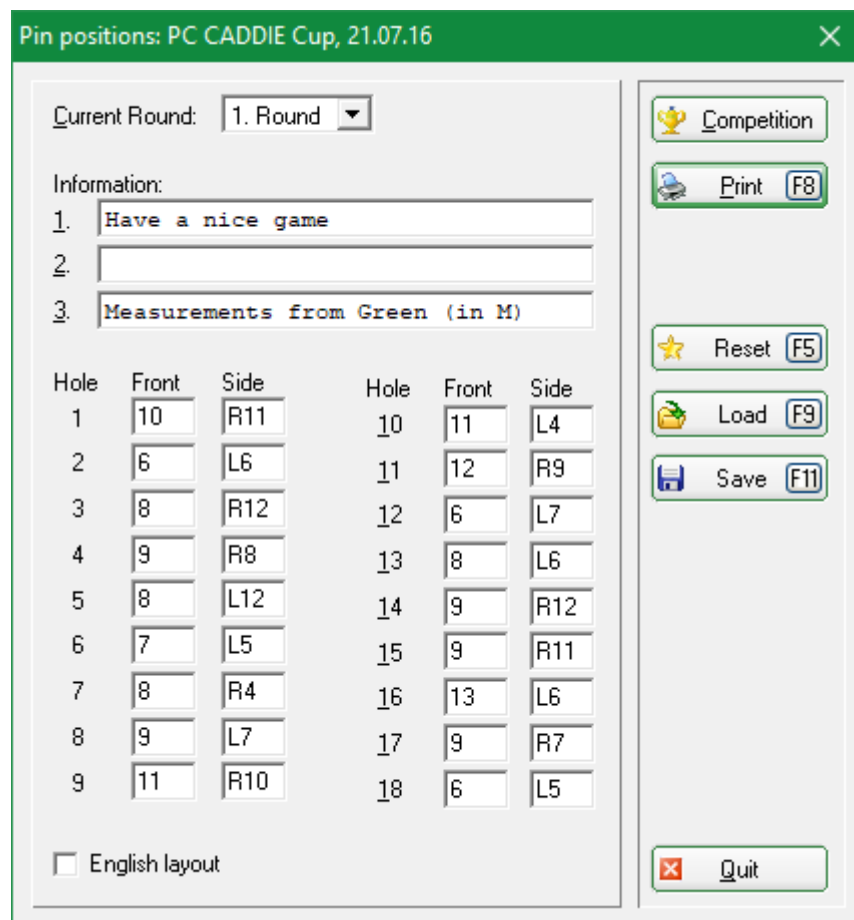


Pin positions

The pin position function allows you can print complete pin position cards. You can access this function via **Competitions/Print.../Pin Position** or by clicking **Pin Positions** in the Scorecard dialog. Select the tournament, the respective round, and then enter the data:



Hole	Front	Side	Hole	Front	Side
1	10	R11	10	11	L4
2	6	L6	11	12	R9
3	8	R12	12	6	L7
4	9	R8	13	8	L6
5	8	L12	14	9	R12
6	7	L5	15	9	R11
7	8	R4	16	13	L6
8	9	L7	17	9	R7
9	11	R10	18	6	L5



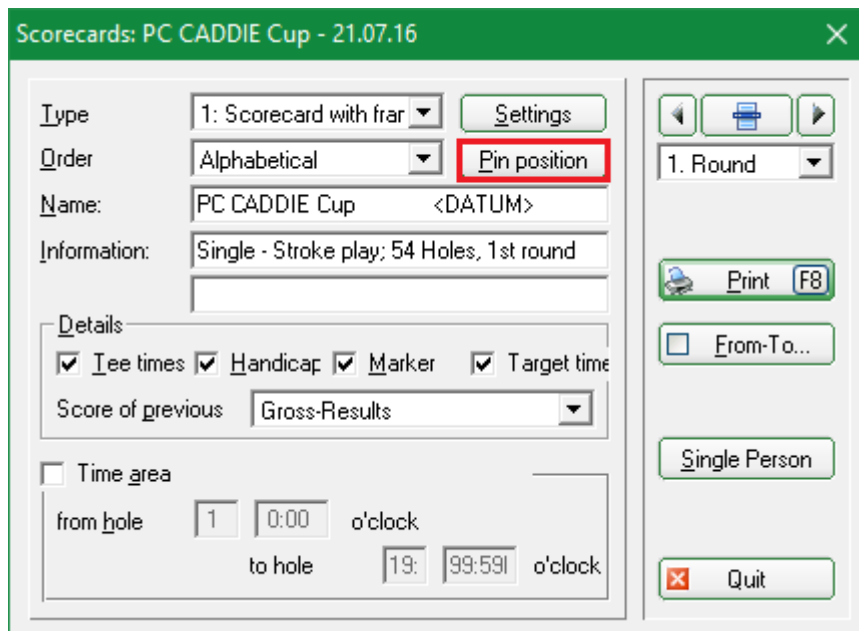
Check the **English layout** box if you prefer this format.

Four pin-position cards are printed on a single A4 sheet after you start the process with **Print** (F8). Then you only need to cut this sheet.

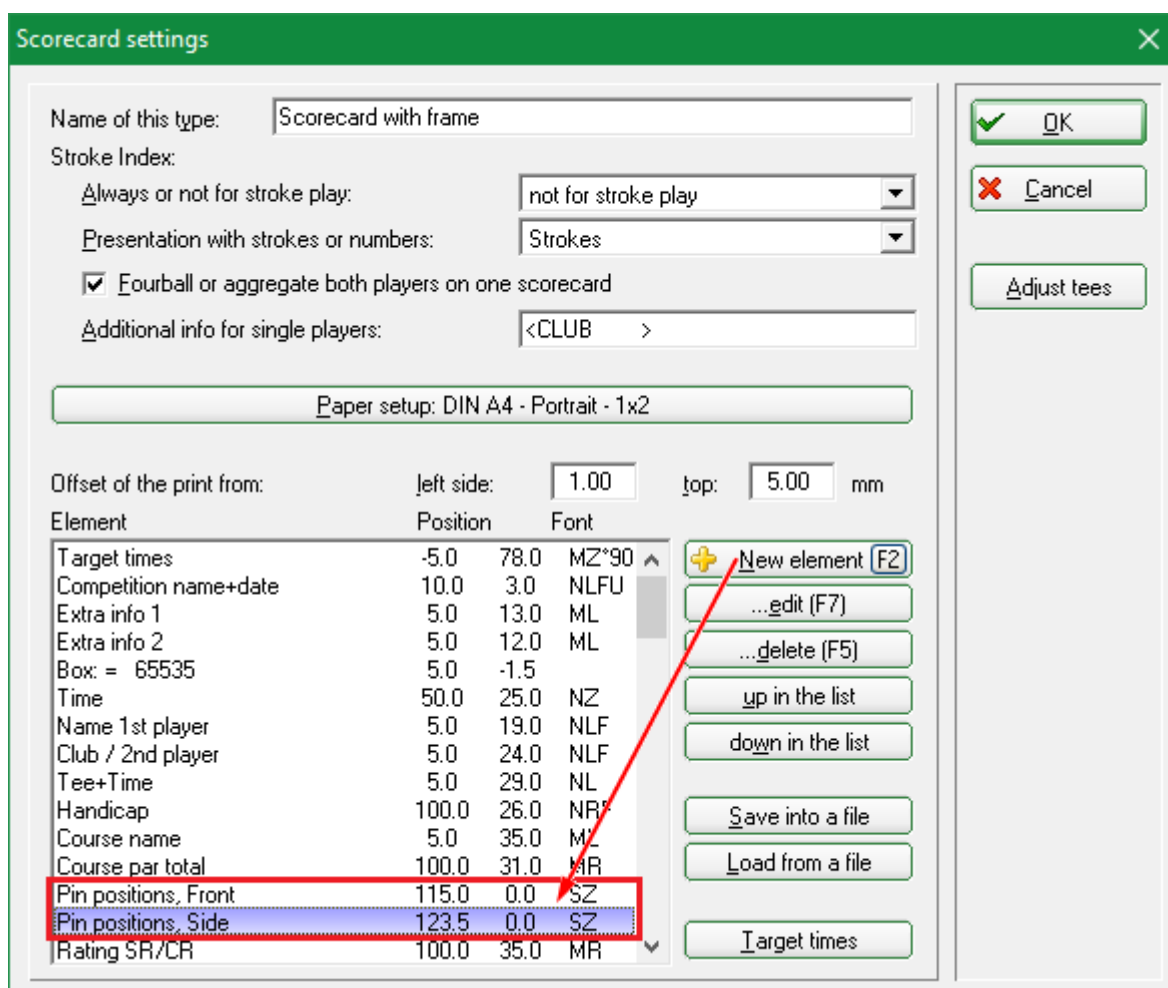
HINT: Also note the **Reset** (1) button, which allows you to clear the window in order to enter new data. **Saving** and **Loading** (2) can also be very handy and save lots of work. Please don't change the file path (PC CADDIE\texts\)) and the file extension suggested by PC CADDIE.

This function also enters the pin positions that are printed on the scorecards. If you do not want to print pin position cards, you can cancel it by pressing **End** - all input is saved and ready for scorecard printing.

Click on **Competitions/Print.../Score Cards** and select the appropriate tournament. You can use the button **Pin position** to enter the positions or to double-check your inputs.



The button **Settings** open the following windows:



You can see here the scorecard's „building blocks“: „Pin Positions, Front“ and „Pin Positions, Side“, which must appear in the scorecard. If they are not available in the selection, you can add them via **New element**(F2). Double-click to open the item and set the positions on the scorecard.

Pin positions, Front

Print this information

Position: from left: mm
from top: mm

Size: width: mm
height: mm

(You can leave the size at 0,00. Then they will be automatically fixed.)

Font: Type:
Size: (0=standard)
Position:
Rotation: * Graduation
Style: Bold
 Underline
 Italic



Always save your scorecard design with a new name and do not change your default template.

Once you have inserted the blocks and positioned them appropriately on the scorecard, confirm with **OK**. Then click **Print** (F8) and check the position on the scorecard:

PC CADDIE Cup 15.01.11
 Einzel-Zählspiel nach Stableford; 18 Löcher
Heck, Axel (2,5)
Wittenbeck, Ostsee G 18 Loch - Golf Club Langenstein
 heax Tee 1, 10:20 Uhr **2** GELB CR: 71.6 / Slope: 129

Zeit	Loch	Champ. Herren	Normal Herren	Champ. Damen	Normal Damen	Vorg.-Vert.	Par	Spieler	Front	Side
10:20	1	382		355	332	5	4		10	R11
10:26	2	396		372	324	3	4		5	L6
10:32	3	486		466	413	7	5		8	R12
10:39	4	346		319	279	13	4		9	R8
10:45	5	203		188	154	11	3		8	L12
10:50	6	364		333	293	9	4		7	L5
10:56	7	137		117	96	17	3		8	R4
11:01	8	360		343	302	1	4	/	9	L7
11:07	9	433		411	380	15	5		11	R10
	Out	3107		2904	2573		36			
11:24	10	399		374	343	6	4		11	L4
11:30	11	339		320	275	16	4		12	R9
11:36	12	391		372	336	8	4		6	L7
11:42	13	170		160	136	18	3		8	L6
11:47	14	467		452	408	10	5		9	R12
11:54	15	536		505	443	4	5		9	R11

Unterschrift Zähler
 Quicket, Rosemarie (38)