

Inventory

This function is used with the *merchandise management* module.

The inventory procedure essentially differs depending on whether you take the inventory manually, i.e. whether you manually note the number of items counted per article on a list, or whether you work with the help of an inventory scanner.

For manual stocktaking, first print out the inventory via **Articles/Print.../Article list** to print out the „Inventory list (manual)“:

If required, you can set different options here (specific product groups, sequence), preferably just select „All active items“ with a stock of „<> 0“. Diese Liste enthält eine Spalte „Zählmenge“ zum


Eintragen des Bestandes:

Artikel-Liste

PROSHOP

Layout: Inventurliste (manuell)
Reihenfolge: Warengruppe, Bezeichnung
Bestand: <> 0
Alle aktiven Artikel

Stand: 30.12.10, 13:38 Uhr
VK S K

Nr.	Barcode	Zählmenge	Art.Nr.	Gruppe	Bezeichnung	
1			100300030100	BALL	Bälle Impact - Weiß Acushnet	15,00 N K
2			100300030300	BALL	Bälle Impact - Orange Acushnet	15,00 N K
3			Blogo 0115	BALL 101	Logobälle - Weiß - 3er Pack	3,80 N
4			Blogo 0116	BALL 101	Logobälle - Weiß - Dutzend	10,00 N
5			BB 0108	ESLH	Big Bertha Driver - Stahl - Driver 12,5"	239,00 N

Inventurablauf

Um nun den Vorgang der Inventur in PC CADDIE zu starten, wählen Sie im Hauptmenü
Artikel/Inventur:



Die einzelnen Schritte der Inventur sind in diesem Eingabefenster leicht zu erkennen.

Für die manuelle Inventur sind die Schritte 1, 4, 5, 6, 7 wichtig, bei der Inventur mit Scanner arbeiten Sie über die Punkte 1, 2, 3, 5, 6, 7.

1. Inventurzahlen auf Null stellen

Vor jeder Inventur müssen die Inventurzahlen auf Null gestellt werden. Dies ist in jedem Fall für die manuelle Inventur sowie für die Inventur mit Scanner notwendig. Klicken Sie dazu den Button **1. Inventurzahlen auf Null stellen**.

Dieser Schritt dient dazu, dass die neuen Inventurzahlen nicht mit den alten, gespeicherten Zahlen der letzten Inventur vermischt werden.

2. Inventurzahlen vom Scanner einlesen

In Terminalserverumgebungen oder in anderen komplexeren Fällen kann man hier auch unter dem Menüpunkt „Scannertyp“ eine lokal erzeugte Datei einlesen, indem man das Drop_Down_Menü auf „Metrologic Scannerdatei stellt“ und dann die Datei über den Windows-Explorer auswählt.

Bitte Kapitel unten lesen.

3. Scannerdateien drucken oder neu einlesen

Diese beiden Funktionen (Punkt 2 + 3) sind lediglich für die Inventur mit Scanner von Bedeutung. Sie scannen beispielsweise die Ware eines Regals ein und lesen diese Daten danach vom Scanner in PC CADDIE ein. Die Beschreibung hierzu finden Sie weiter unten (je nachdem, welchen Inventurscanner Sie verwenden).

4. Inventurzahlen manuell eingeben

Diese Funktion ist hauptsächlich für die manuelle Inventur gedacht. Zählen Sie die Artikel gemäß der vorher gedruckten Artikelliste und tragen dann unter „Zählmenge“ die gezählte Anzahl je Artikel in die Liste ein. Danach geben Sie diese gezählten Bestände mit Hilfe von **Inventurzahlen manuell eingeben** in PC CADDIE ein:

Artikelbestand manuell festlegen

Welcher Artikel soll bearbeitet werden?

Artikel:

Zähl-Stichtag (abends): 28.11.2021

Reihenfolge: Warengruppe, Bezeichnung

> Weiter

Ende

Artikelbestand manuell festlegen

Welcher Artikel soll bearbeitet werden?

Artikel: avx 0000 AVX Logobälle -

Zähl-Stichtag (abends): 28.11.2021

Reihenfolge: Warengruppe, Bezeichnung

> Weiter

Ende

Sie wählen hier Ihren ersten Artikel unter Eingabe des Suchkürzels oder mit Hilfe der Listenfunktion (F2), klicken **Weiter** und erhalten folgendes Fenster:

Article list [X]

General | Special Filters

Layout:

- Stocktaking list of all articles
- Stocktaking- not balanced with registered stock
- Stocktaking- less than registered stock
- Stocktaking- more than registered stock
- Stocktaking more than 0 or <> registered stock
- Stock taking- more than "0"
- Total of product groups (all articles)

Order: **Art.group, name**
Article Code

Only these article groups: **Sel**

Stock lower than the minimum

☒ all colour and sizes combinations

Filter: **All articles + payment meth** **ignore stock taking**

Print only articles in stock **<> 0**

☒ Include negative stocks in total

Calculation to this deadline: (evening)

Print [F8] **Quit**

Die Liste der Differenzen ist bereits voreingestellt: „Inventur größer 0 oder <> Book“

Inventur-Liste PROSHOP

Layout: Inventur größer 0 oder <> Buch
Reihenfolge: Warengruppe, Bezeichnung
Bestand: <> 0
Alle Artikel + Zahlarten

1 2 3 4

Stand: 30.12.10, 14:28 Uhr

Nr.	Art.Nr.	Gruppe	Bezeichnung	MwSt.	EK	VK	Min	Akt	Inv	Diff	Diff*EK
Bälle											
1	100300030100	BALL	Bälle Impact - Weiß	19,0%	8,00	15,00	3,0	40,0	40,0	0,0	0,00
2	100300030300	BALL	Bälle Impact - Orange	19,0%	8,00	15,00	3,0	6,0	-----	-6,0	-48,00
3	Blogo 0115	BALL	Logobälle - Weiß - 3er Pack	19,0%	0,50	3,80	0,0	14,0	13,0	-1,0	-0,50
4	Blogo 0116	BALL	Logobälle - Weiß - Dutzend	19,0%	5,50	10,00	0,0	13,0	13,0	0,0	0,00
Total:		BALL	Bälle		446,50	873,20		73,0	66,0	-7,0	-48,5

The relevant columns are labelled 1 to 4.

1. Current stock in PC CADDIE
2. Stock according to counted inventory
3. Difference between current stock and counted stock
4. Difference between both stocks with the value of the purchase price

With **End** you can exit the function.

It may be necessary to make further changes to the inventory levels of various items after checking

the differences. You can do this at any time via point 4 **Enter inventory figures manually** at any time. Only when you are sure that the differences shown are correct should you continue with point 6.

6. set stock to inventory level

This final step is the completion of the inventory. With this function, you change the complete item stock of your Proshop to the new, counted and entered inventory stock. If, for whatever reason, you want to delete the inventory figures you have entered and do not want to transfer them to the official Proshop stock, start again with point 1. **set the inventory figures to zero.**

Proceed as follows to transfer the inventory stock: In order to post possible differences, please first create a new inventory under **Persons/...enter new, change, delete** create a new person, e.g. called „Inventory, differences“ with an „i“ as the search indicator. Then click on point 6 of the inventory **Set stock to inventory level.**

The screenshot shows a software window titled "Artikelbestand auf Inventurbestand setzen". The window has a light green header bar with a question mark icon and a close button (X). The main content area is white and contains the following text and controls:

- Instructional text: "Wenn der Inventurbestand stimmt und geprüft ist, können Sie mit dieser Funktion den Inventurbestand zum aktuellen Bestand machen!"
- Buttons: A green button with a checkmark icon labeled "Starten" and a red button with an 'X' icon labeled "Abbruch".
- Section header: "Differenzen in diesem Konto buchen:"
- Account selection: A dropdown menu showing "indi" with the text "Inventur, Differenzen" next to it. To the right of the dropdown are two small icons: a list icon (three horizontal lines) and a menu icon (three dots).
- Checkboxes and options:
 - ☒ Jeweils nochmal abfragen
 - ☒ Nur Artikel mit Bestandsführung
d.h. nur Artikel, für die ein Mindestbestand eingegeben wurde!
 - ☐ Nur Artikel, die gezählt wurden
d.h. nur Artikel, für die ein Zählbestand eingegeben wurde, auch ein Bestand 0 muss dann manuell bestätigt werden!
Wird diese Option nicht aktiviert, werden ungezählte Artikel mit Bestand 0 ausgebucht
 - ☒ Vorherigen Inventurbestand archivieren
- Footer text: "Letzte Übernahme: . . . -"

The newly created inventory „person“ is automatically selected so that the inventory differences are

posted to their sales account. The other options can be activated or deactivated depending on the items for which you now want to change the stock figure to the counted quantity. The automatic proposal corresponds to the usual procedure. Please read the selection options carefully and contact PC CADDIE Support if you have any queries. Activate the required options and then confirm with **Start**.

7. print list of inventory entries

Finally, you can print out the correction entries if you wish. The stocktaking is now complete. The item stocks have been automatically set to the counted quantity. To check or verify the new opening stock, you can go to **Articles/Print.../Article list** to print various item lists.



Note: Any sales during the stocktake are taken into account immediately, i.e. a sold item is also automatically reduced by one item in the inventory stock. For this reason, it is not necessary to complete the inventory within one day.

Use of inventory laser scanner PDL-20

Before you import the scanned files, please note that all inventory figures must first be set to zero, see chapter **1. setting inventory figures to zero**.

Switching on the laser scanner

Please charge the scanner in the charging cradle or the battery in the rear charging drawer, preferably overnight. Then switch on the inventory scanner using the PWR button (red button at the bottom). Please make sure that REC appears in the top right-hand corner of the screen. If this is not the case, please press the M2 button twice.

Scanning the sales items

To scan, please aim at the barcode and press the orange button. It may be useful to delete the scanner memory before scanning. This will ensure that no old data falsifies the current inventory.

You either have to scan once per item (if you have five packs of balls, they have to be scanned five times), but you can also enter a factor. There are two ways to do this: 1) First enter the factor (in our example the number 5), then type the dot (in the number block under the 2) and confirm with **Enter**. You can now scan the barcode. 2) Or scan the barcode first, then enter a dot followed by the number and finally confirm with **Enter**.



In any case, please note that all entries are added up. For example, if an item is scanned twice and then .5 Enter is typed in, this corresponds to a stock of $1 + 5 = 6$!

However, you can also use negative factors (e.g. -5) to correct the counted stock. When typing, you

can always use the arrow keys to move to the character to be deleted and then press the F4 key to start the deletion process. Press the CLR key to delete the entire number entry. If a character is to be overwritten, use the arrow keys to move to the desired character and then enter the new character. The old character will be overwritten immediately.

Inventory scanner Datalogic Memor X3

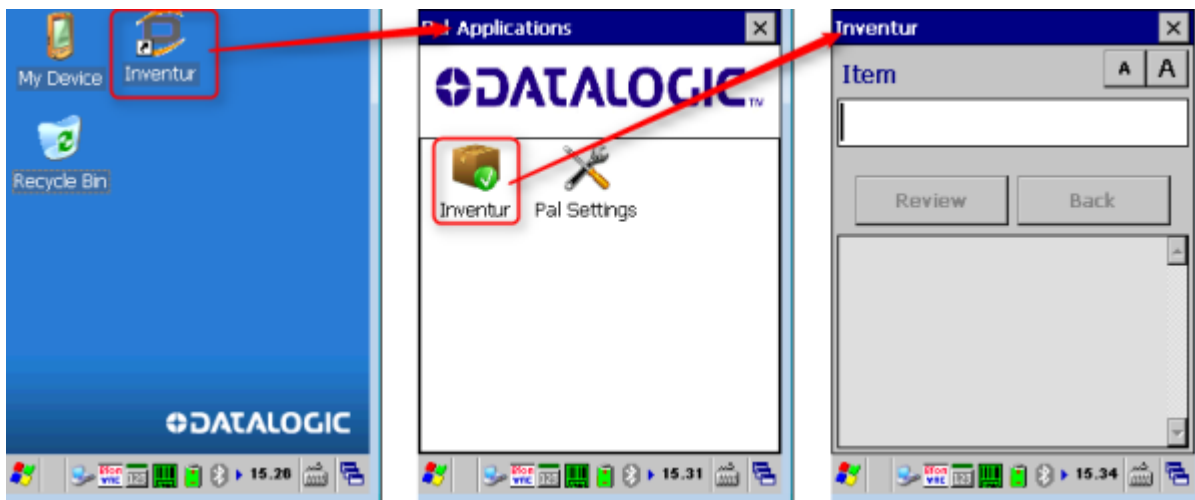
Start inventory programme

Via button

To start the inventory programme, press the **F1 key**.

Via Desktop

1. Double-click on Inventory
2. Press on Inventory



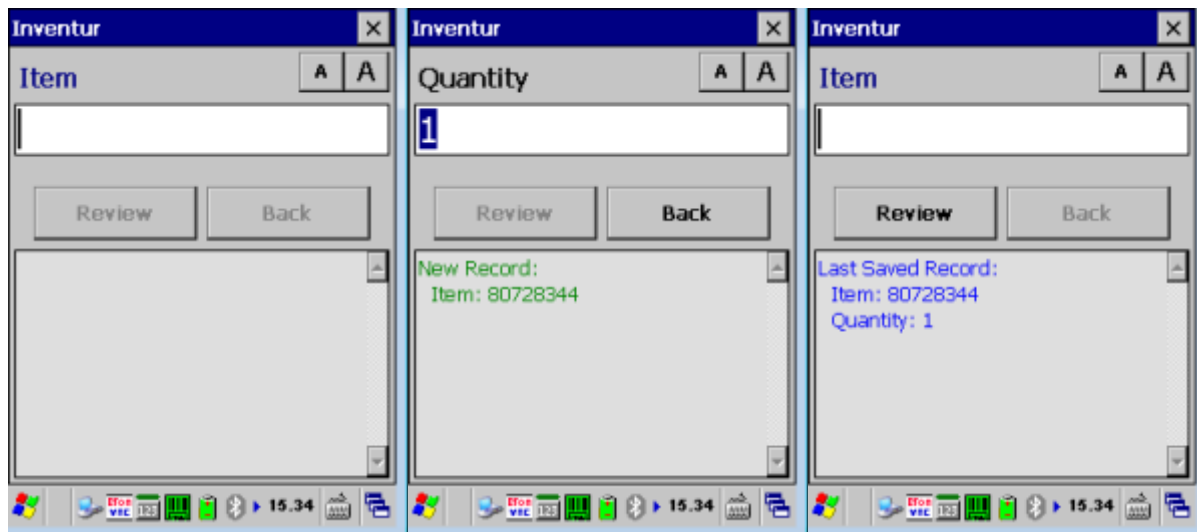
Scan article

1. Scan item barcode using the orange scan button
2. Enter quantity (1 is defined as standard)
3. Confirm with the ENT button
4. Check
5. Scan next item



The number is optional and can be activated / deactivated via Settings.

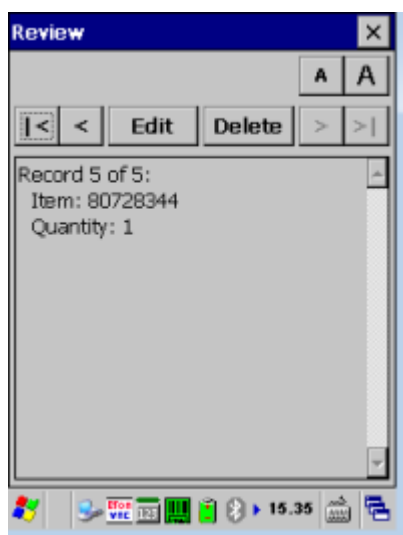
You can also work here with the factor (e.g. 5) with 5. + scan article or scan article + .5. see above.



Overview / Delete data

Via the button *Review* button, you can review items that have already been scanned.

The X button takes you back to the main dialogue.



Under *Delete* you can delete the currently displayed item or clear the entire memory of the device.



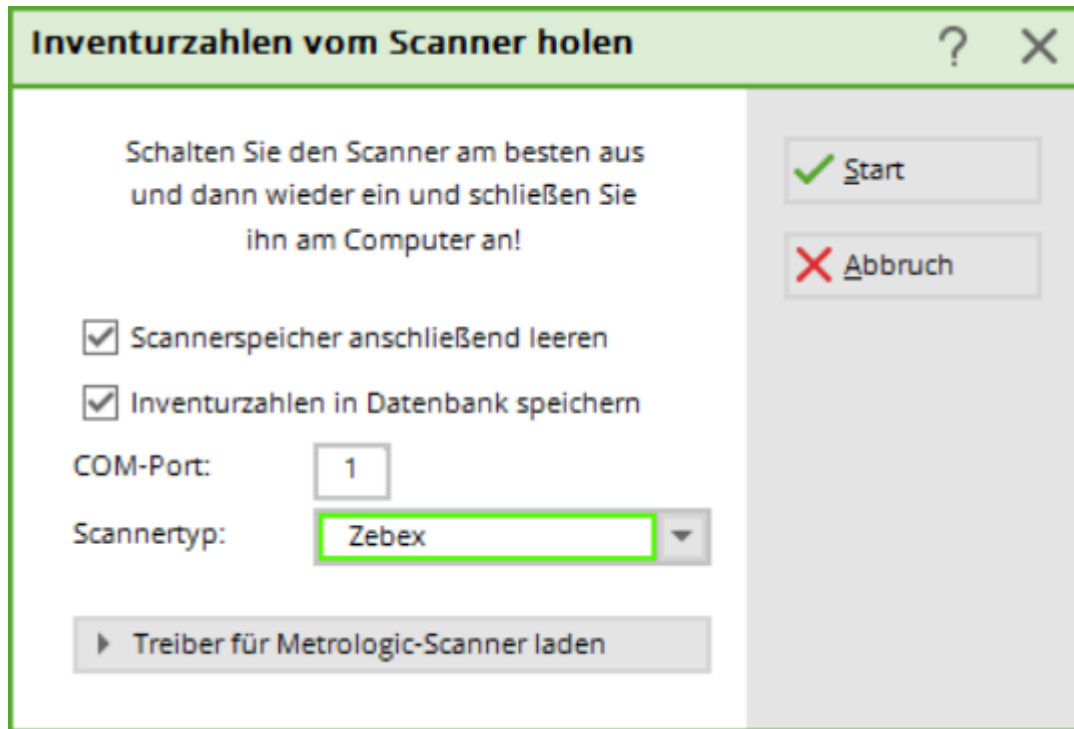
Post-processing the inventory file

By pressing the F6 key once, you can scroll through the scanned numbers again (using the arrow keys). From the position you are currently at, e.g. Rec. 100, press the F1 key to jump directly to Rec. 90.


Pressing the F2 key would automatically take you to Rec. 110. To change a data record, press F3. To delete a data record, press F4. If you want to reach a specific position, press F5 and enter the record number. number of the data record. If in doubt, you can also switch off and on again briefly - the data will be retained in any case (but confirm the factors with ENTER first!!).

Importing inventory figures from the scanner into PC CADDIE

In PC CADDIE, use the menu to select **Article/Inventory/2. Import inventory figures from scanner**



PDL-20

To read the data in PC CADDIE, place the reader in the charging cradle  The charging cradle must be connected to the power supply. Switch on the reader and press the M1 button twice if necessary.

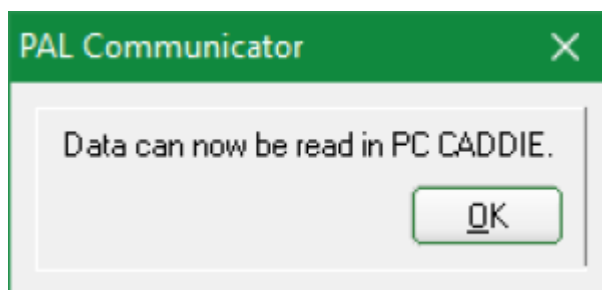
On the correct COM port selection. With **Start** the count quantity is read into PC CADDIE.

Datalogic Memor X3



The PAL Communicator software must be started

1. Place the inventory scanner in the charging cradle
2. The PAL Communicator software copies the data from the reader to the computer
3. After successful copying, the following message is displayed:



1. **COM port** can be ignored.
2. In PC CADDIE, set the scanner type to **Memor X3 (PAL)** set.
3. **Start**

Check import

After transferring the data to the computer, you should check whether everything has been transferred (for example, check the inventory level of the last scanned item).



If individual items cannot be imported, they must be processed manually, see chapter **Entering inventory figures manually**. You can also make any corrections to stock levels manually instead of scanning them again.

Emptying the scanner memory

Press the M1 button and then use the right arrow button to go to „2. Task Utility“. Confirm with Enter. Now select the option „3. Delete Data“ with the right arrow key and confirm again with Enter. Use the M2 button to switch to „Y“ and press Enter.

You can scan the items and empty the memory after approximately 200-300 items. You never know if something might happen to the scanner in between...

3. print or reload scanner files (only if required) This menu item is only required if something has gone wrong during the course of the day when importing via the scanner. In this case, the inventory figures must be completely reset to zero (see section **1. setting inventory figures to zero**) and the file created during the physical inventory must be read in again.

After importing the inventory figures, you can finalise your inventory with points 5, 6, 7 (as with the manual inventory). Please read the corresponding chapters above.

Inventory scanner ZEBRA TC21



The On/Off button is located at the top right. The scan button is located on the right-hand side.

Installation is done by PC CADDIE for you. We can connect directly to the scanner. After Installation you can start scanning.

Using the Metrologic Optimus inventory laser scanner

Before you import the scanned files, please note that all inventory figures must first be set to zero, see chapter **1. setting inventory figures to zero**.

Switching on the laser scanner

Please charge the scanner in the charging cradle, preferably overnight. Plug the charging cradle into the appropriate computer port (USB or serial) and the power connection.

Scanning the sales items

Switch on the inventory scanner with the red button (bottom right). To scan, aim at the barcode and press the orange button.

It may be useful to delete the scanner memory before scanning to ensure that no old data falsifies the inventory (see last section).

You will find the following options on the scanner display when starting up:

Programme start - Functions: Press the number 1.

You now have two options:

1. a field = Press the number 1. scan the barcode. The system always The scanned item is always counted once. Here you can also enter the factor first, e.g. 5, then type the dot (in the number block above the 3) and then scan the barcode.
2. with number = Press the number 2. Here you can scan the barcode, then type in the number of the item present and confirm with Enter.



In any case, it must be noted that all entries are added up, for example, if an item is scanned twice and then 5. is entered and scanned, this corresponds to a stock of $1+5=6$! However, you can also use negative factors (e.g. -5.) to correct the count.

When typing, you can delete backwards by pressing the BS key. If you press the down arrow key and then the BS key, the entire entry is deleted.

Post-processing the inventory file

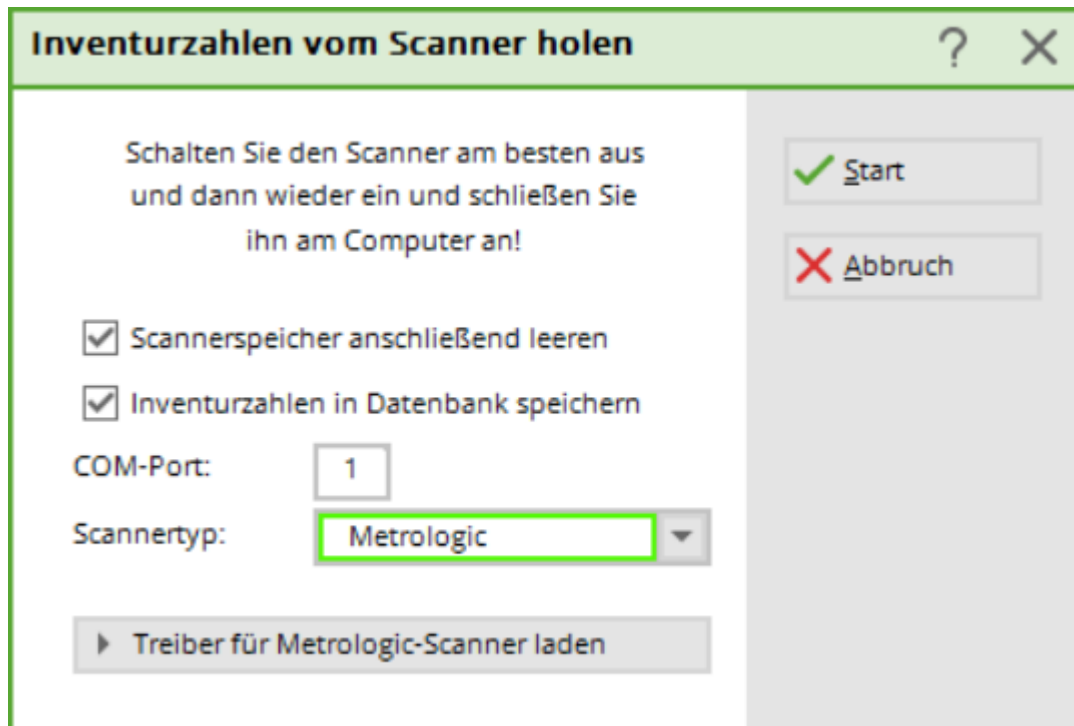
By pressing ESC, then 2 (Functions) and again 2 (Change data), you can scroll through the scanned numbers again (using the arrow keys).

To change a data record, press F8. To delete a data record, press F9. If in doubt, you can also switch

off and on again briefly - the data will be retained in any case (but confirm factors with ENTER beforehand!!).

Importing inventory figures from the scanner into PC CADDIE

Switch on the inventory scanner with the red button (bottom right). In PC CADDIE, select **Articles/Inventory/2. Import inventory figures from scanner**. Start the driver installation via the button **Load driver for Metrologic scanner**.




Your computer should then have recognised the inventory scanner in the control panel. If this is not the case, please install the driver directly via the Control Panel. To do this, go to your main directory PC CADDIE. There in the Tools and Metrologic folder. Open the Data Read file with a double click.

Enter „Metrologic.txt“ under File name. Make sure that „Cradle-IR“ is selected for the interface and that the correct COM port is displayed. Exit the programme with „Cancel“. If you do not know the COM port, please proceed as follows:

Settings, Macros, enter „dev“ (without inverted commas) and confirm with **OK** to confirm. Click on the „Ports (COM and LPT)“ menu item. The COM port is shown after the individual connections.

As soon as the driver is loaded, you can start reading the data into PC CADDIE. To do this, place the

reader in the charging cradle  Attention! The charging cradle must be connected to the power supply. Press ESC so that the „Programme start and functions“ menu appears in the display again. appears on the display. Press buttons 2 - 1 - 2 in succession. The scanner will now start transferring to PC CADDIE. Please select the function **Read in article/inventory/2nd inventory figures from scanner** and **Start** and press Start.

After transferring the data to the computer, you should check whether everything has been transferred (check the inventory level for the last item scanned).



You can then delete the data from the scanner (see next chapter).



Please note that the programme selection in the scanner is only active for a short time. The scanner switches off again after a short waiting time. You may therefore have to press 2 - 1 - 2 again after a short interruption.

If individual items cannot be scanned, they must be reprocessed manually, see chapter **Entering inventory figures manually**. You can also correct any stock corrections manually instead of scanning them again.

Emptying the scanner memory

After reading in the data, you will find the following options on the display of the inventory scanner the options: Delete data: All data, Last data. Press the desired number (normally 1). When you are prompted „Secure“, please press 1 again to confirm „Yes“.

You can scan the items and empty the memory after approx. 100 items. (You never know if something might happen to the scanner in between...)

3. print or re-read the scanner files (only if required). This menu item is only required if something has gone wrong during the course of the day when importing via the scanner. In this case, the inventory figures must be completely reset to zero (see section **1. setting inventory figures to zero**) and the file created during the physical inventory must be read in again.

After importing the inventory figures, you can finalise your inventory with points 5, 6, 7 (as with the manual inventory). Please read the corresponding chapters above.