

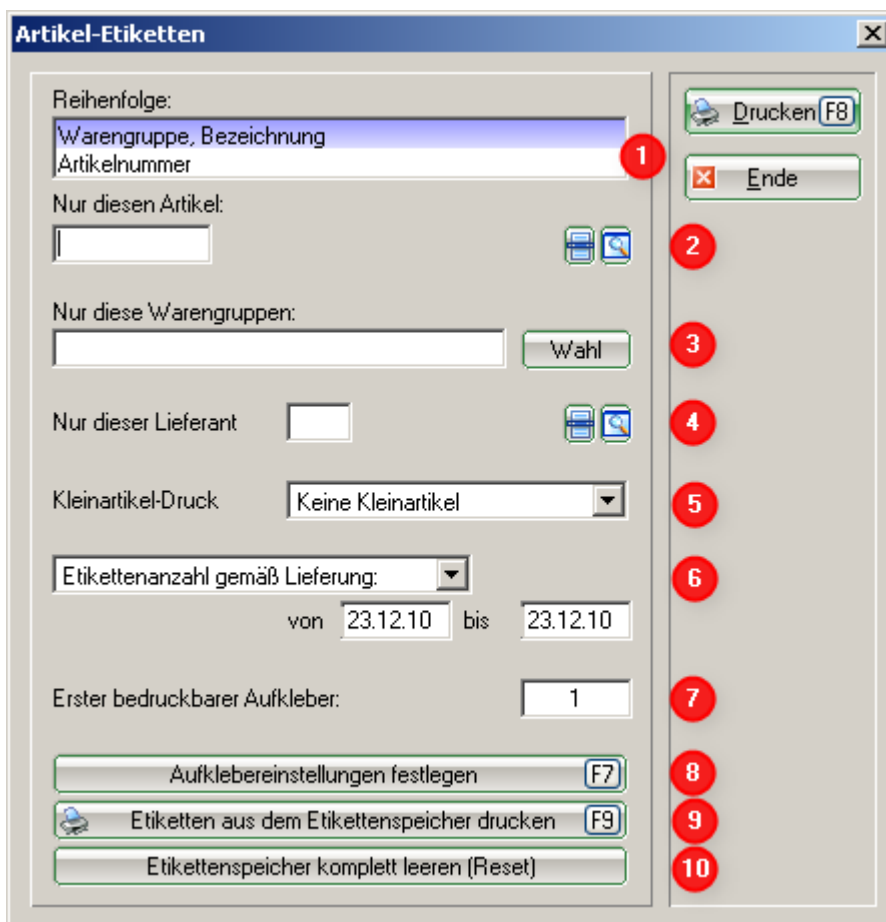
Labels

For item labelling in the pro shop, you should use labels that are easy to remove.

In principle, the label print is automatically saved for each goods receipt of an item that has the status „normal“. You can therefore process several article receipts and the labels for these can be printed out as a whole at a later date.

However, if you wish to reprint additional labels for individual items, this can also be done at any time.

You will find this in PC CADDIE under **Articles/Print.../Labels** you will find the window for printing labels.



1. Definition of the order
2. Selection of a specific article
3. Selection of a specific product group
4. Selection of a supplier
5. Options with or without small items
6. Define number of labels, labels according to delivery or according to stock
7. Definition of the first printable label
8. see chapter below
9. see chapter below
10. The label memory is completely emptied

Define label settings

Etiketten-Aufteilung

Anzahl der Aufkleber: nebeneinander
untereinander

Seitenränder: von links: mm
von oben: mm

Größe eines Aufklebers: Breite: mm
Höhe: mm

Zeilenabstand: mm

Etiketten-Text:

```
÷~M<NAME 1  
÷~M<NAME 2  
  
÷~C*<ARTNRBARCO>* ~C*  
÷~C*<ARTNRBARCO>* ~C*  
  
÷~S * <ARTNR > -<KI>* ~M<PREIS
```

OK
Abbruch

This is where you define the dimensions of your labels. You can read the size of your labels on the packaging and set them accordingly.

Please leave the „Label text“ field in the default setting. If you wish to make changes to this, please contact PCC Support.

Printing labels from the label memory

After entering a goods receipt, the labels are automatically collected in the label memory. They are printed here.

Etiketten drucken

Es sind 1 neue und 0 alte
Etiketten zum Ausdruck vorgesehen.
Sollen diese jetzt gedruckt werden?

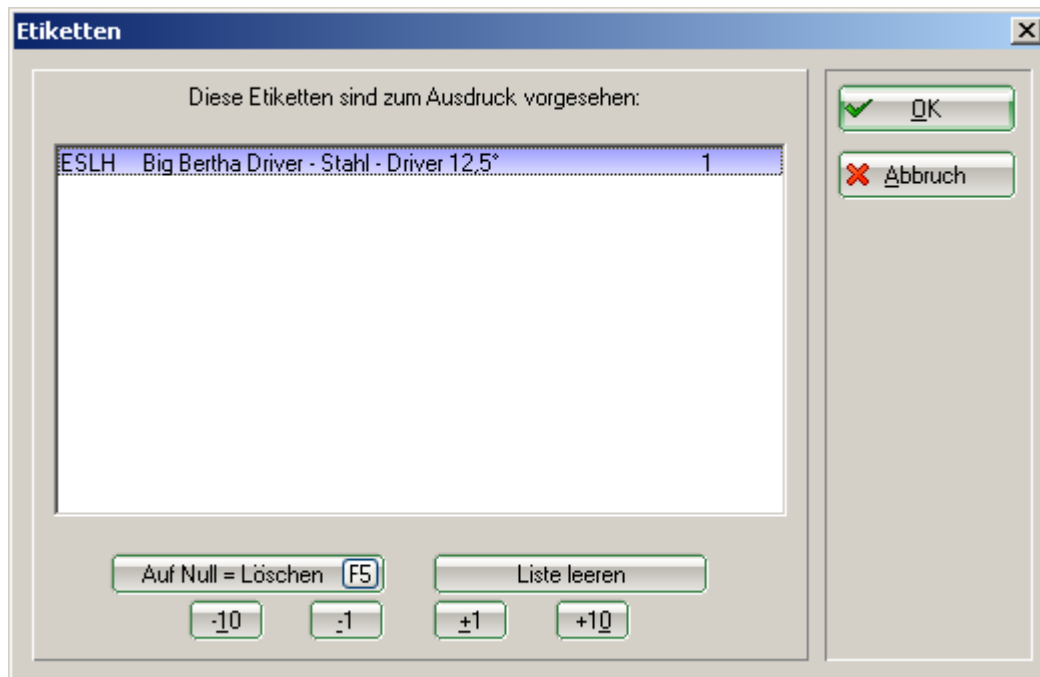
Ja, jetzt drucken
Später drucken
Gespeicherte Etiketten löschen

Erstes bedruckbares Etikett:

Etiketten-Liste bearbeiten

OK
Abbruch

With **Edit label list** you can delete individual labels, change the number of labels or empty the list completely.



Barcode font

In order for the article numbers to be converted into barcodes, the font must be set correctly. The font 12 Code39 is used for this:

Druck-Layout-Einstellung



Seitenlayout-Befehle:

Startknopf:

Oben:

Abstand gross

▶ Einstellen

Unten

Abstand klein

▶ Einstellen

▶ Scorekarten einstellen

▶ Einzahlungsscheine einstellen

Schriftarten:

Normal:

13 Arial

Wahl

Mittel (Scorekarten):

10 Arial

Wahl

Schmalschrift:

8 Arial

Wahl

Groß (Überschriften):

26 Arial

Wahl

Breit (Zwischen-Über):

18 Arial

Wahl

Nicht prop., normal:

12 Courier New

Wahl

Nicht prop., schmal:

7 Courier New

Wahl

OCR-B (VESR):

12 OCR-B

Wahl

Barcode:

12 Code39

Wahl

Font-Korrekturfaktor:

0,9950

Bildschirm:

1,0000

Linien:

Hori.:

einfach:

0,30

mm

dick:

0,60

mm

Vert.:

einfach:

0,30

mm

dick:

0,60

mm

Höhe:

Briefkopf

22,0

Absender

48,0

Adresse:

55,0

mm

▶ Weitere Seitenlayout-Einstellungen

▶ Layout laden

▶ Layout benennen

✓ Ok

✗ Aabbruch

Fettdruck

Kursivdruck

Unterstreichen