

Open Online Interface



This module exports data from PC CADDIE for display on your website.

Open Online Tournament Interface

The so-called Open Online Interface is a separate PC CADDIE module that generates tournament lists in XML format and makes them available for further processing. This function is used when lists are to be integrated into an external homepage or an info screen. If the module is licensed, the button **Parameter**.

Intranet-Informationen (interne ID: 30)

Turniername: PC CADDIE Cup
Spielform: Vierball - Stableford; 18 Löcher

Informationen | Kategorien | Spielerzahl | Meldegrenzen | Funktionen

Ausrichter: Club DGV-ID: 490000331538
Bemerkung: Sponsor: Schmedding Software Systeme
Nenngeld-Info: 30 € für Mitglieder, 45 € für Gäste
Start: Tee: 1 Zeit: 10:00 Uhr
Anzeige-Status: Meldeliste, Startliste und Ergebnisliste
Teamergebnisse: (keine Teamwertung zeigen)
Turnier ladbar für diese Clubnummern: 0499001

Wettbewerb-Informationen im IIS öffnen

Zuletzt gestartet: 16.07.10 13:47

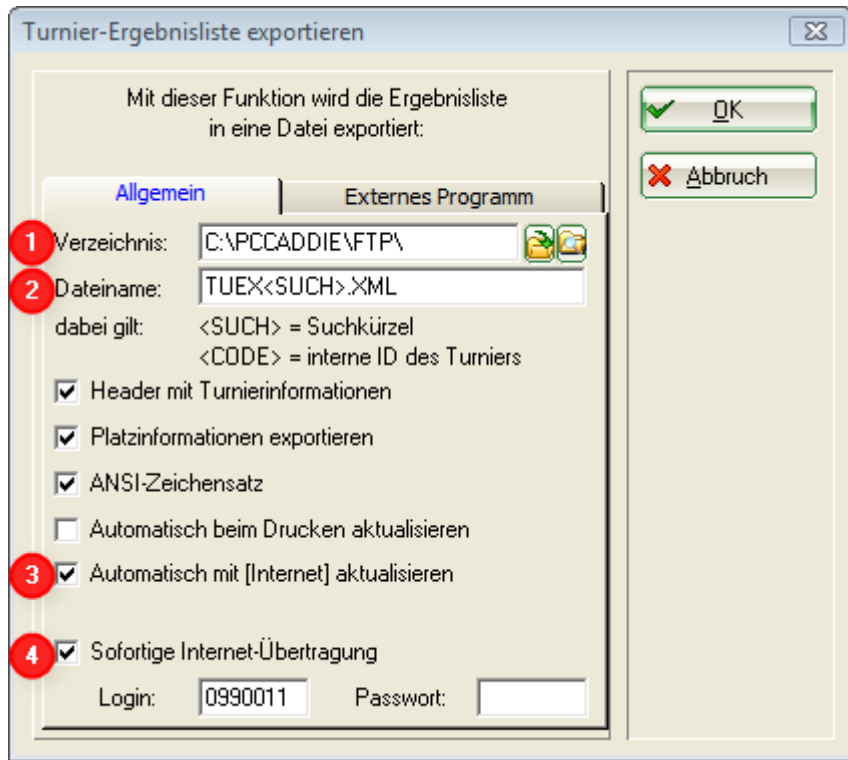
Alle Spieler per Intranet prüfen
Meldeliste ins Intranet stellen
Startliste ins Intranet stellen
Ergebnisliste ins Intranet stellen

Parameter

Export

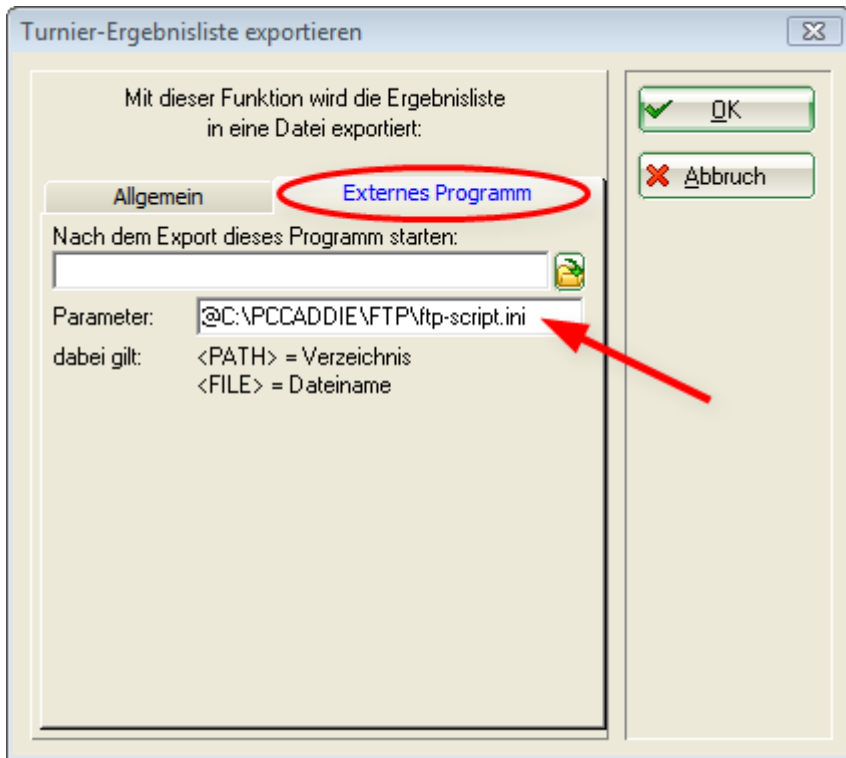
Abbruch

The settings for the future XML export are now installed here:



1. Enter the path to where the file is to be exported. It is recommended to use the FTP folder in the PC CADDIE main directory.
2. Name of the export file - can also be slightly different but always the same (e.g. T-<SUCH>.XML).
3. The function for automatic updating with the Internet starts the export as soon as the connection to the intranet is established. The existing file is overwritten with the current one if there have been any changes.
4. Immediate intranet transfer is the actual interface for Startzeit.com customers and updates the display immediately on the provider's homepage.

In the tab **External programme** tab defines what is done with the exported file. You have the option of starting the direct upload with an *.ini file.



Parameters for calling up the *.ini file which then triggers the upload.

File which starts the upload.



The structure of the file must be as in the example. Server address, login, password etc. The customer must provide PC CADDIE with this FTP access data of the external server.

```

ftp-script.ini - Editor
Datei Bearbeiten Format Ansicht ?

[SERVER]
ADDRESS=www.pccaddie.com 1
LOGIN=administrator 2
PASS=golf08 3
DIALUP=F
DEBUG=F

[WAIT]
SECONDS=0
PAUSE=0

[LIST]
LINE1="UP_DEL , T*.XML , C:\PCCADDIE\FTP\ , /upload" 4
  
```

1. Address: Server address
2. Login: Server login
3. Pass: Password of the server
4. Line1: Command line - this performs the following task: Line1= upload then delete, start the file that corresponds to the following name (file name filter: T*.XML, local path: C:\PCCADDIE\FTP, server path: /upload) start

The file can now be further processed by the recipient.

Open Online Timetable Interface

To send timetable data to an external recipient (e.g. Infoscreen with display loop) you need the the [PC CADDIE://online Real-time service](#) and special parameters, which are inserted by us.

With this function, a file called TTEX is placed in the FTP folder. This file can then be used by an external programme to generate the timetable display.

Open Online Personal Interface

A special parameter is also required for exporting persons via FTP. As soon as this has been added by one of us, the menu item **Persons** the corresponding submenu **FTP export**.

The basic settings for the FTP upload of a *.txt file to a web server (for example) are made in the following dialogue:

Parameter

Personengruppe:
Alle Mitglieder

Abgleichzeiten:
00:00 00:00 00:00 00:00 Uhr
 Mit der Nachtautomatik starten

Export-Umfang:
Personen-Datei: pers.txt
Hcp-Datei: hcp.txt
Hcps ab diesem Datum exportieren: 01.01.10
 Auch aktuelle Turniere automatisch exportieren

FTP-Konfiguration:
Server-Verzeichnis: /upload
Server-Name: www.pccaddie.com
Login: administrator
Passwort:
 Abgleich an diesem Computer starten

Jetzt starten F3

OK
Abbruch

1. Which group of people should be exported?
2. At what times should the export start, or should the process be started automatically with the automatic night function?
3. Names of the export files

4. Here again, as with the Open Online Interface, the **FTP configuration** is entered here. In addition, by ticking the box next to **Start synchronisation on this computer** to define which computer should perform this task.

With **Start now** (F3), the export can also be started manually at any time.