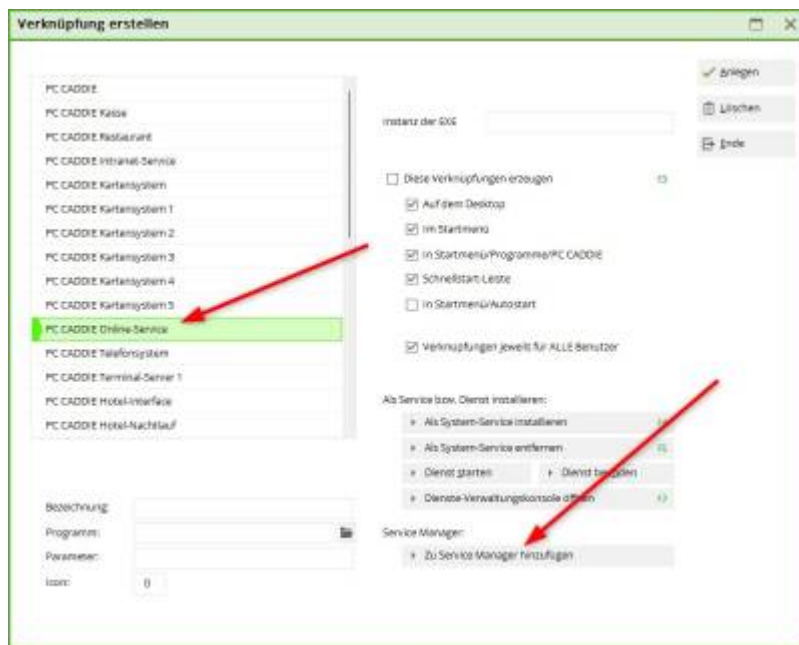


# Install PC CADDIE services

## Reinstall services

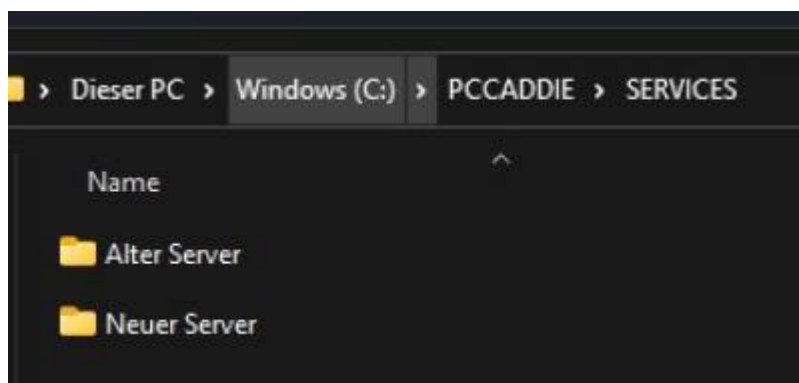
In the [Service Manager](#) click on the button „New“ → „New service via LNK“

1. Select the desired service from the selection on the left
2. Click the „Add to service manager“ button
3. Select the existing Service Manager and confirm with OK

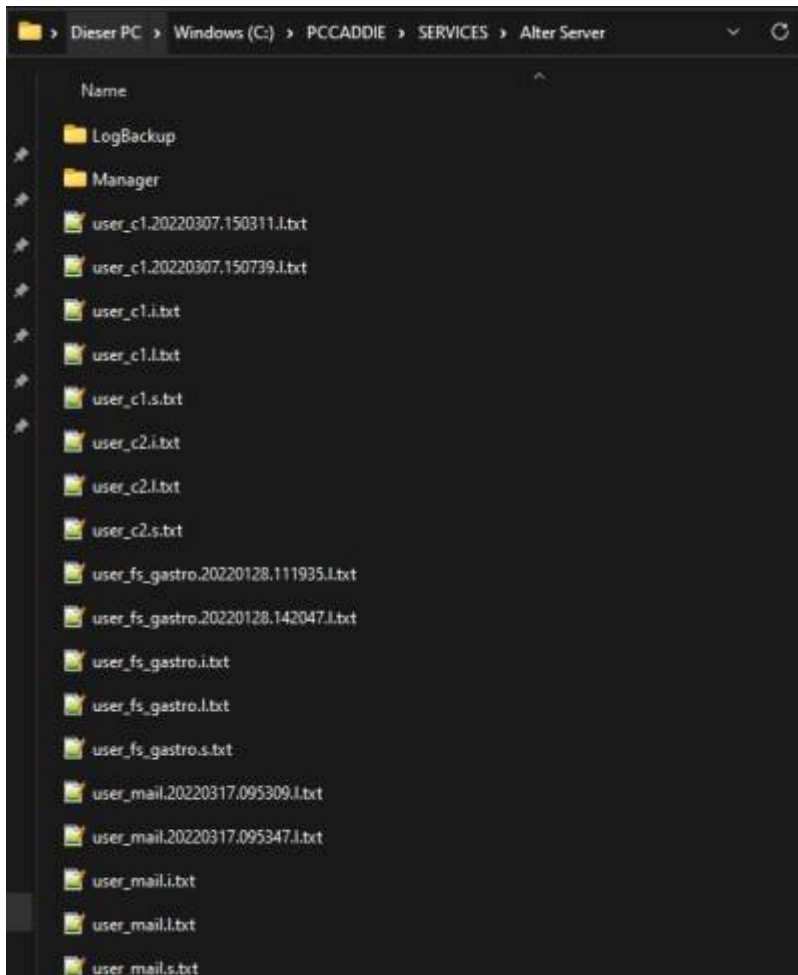


## Apply services

- Macro „xm“
- Open \SERVICES\ folder



1. Open folder with old server name
2. Select and cut the entire content except for the \MANAGER\ folder



1. Paste into the \SERVICES\„New server name“\ folder
2. Delete \SERVICES\„Old server name“\ folder

Each service must then be started once locally and the new paths entered.