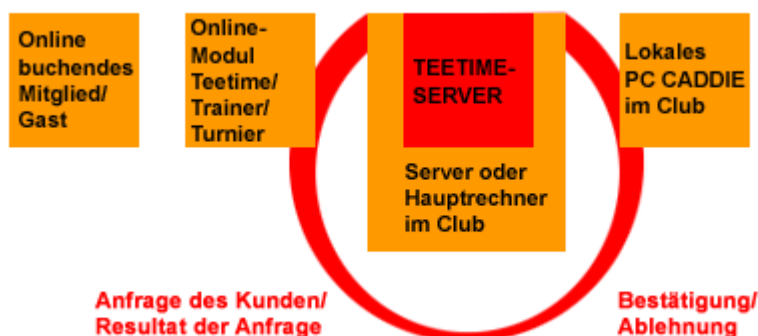


PC CADDIE://online Real-time service

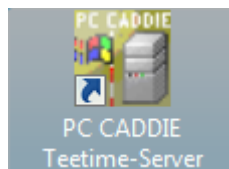
Description of the online service

The **PC CADDIE://online Service (PC CADDIE.NET Server, TT Server, Teetime Server)** is an interface between the PC CADDIE://online real-time services on your website and your local PC CADDIE.

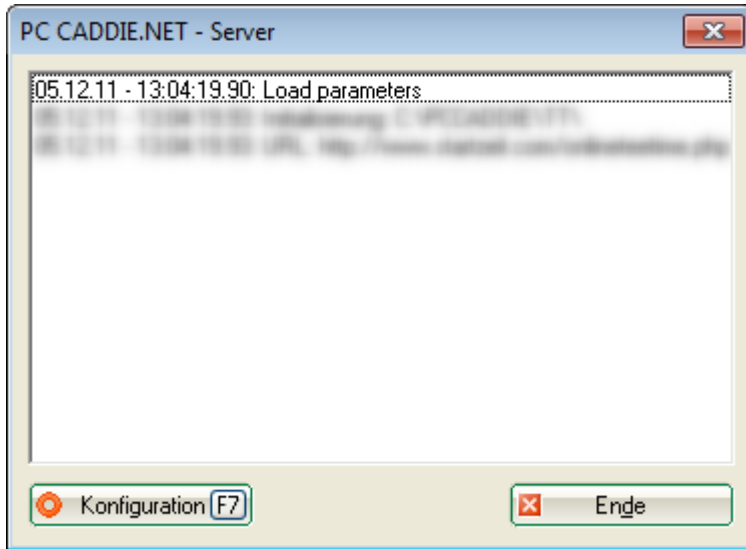


This is a service that is ideally installed on your (PC CADDIE) server. This ensures constant communication between the PC CADDIE://online booking system and the local PC CADDIE. It should therefore be installed where your main PC CADDIE databases are located.

If the service does not run properly, the following desktop icon can be used to start it:



This is what the tee time server looks like when started:



The requests and bookings taking place are listed in this window. It updates itself and also shows whether the service is active.



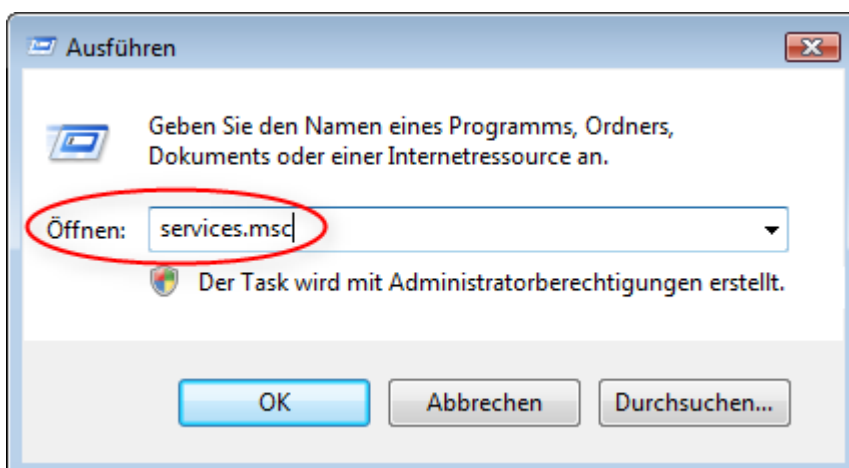
The PC CADDIE://online service may only be started once, otherwise serious errors, such as incorrect bookings, will occur.

Installation as a service

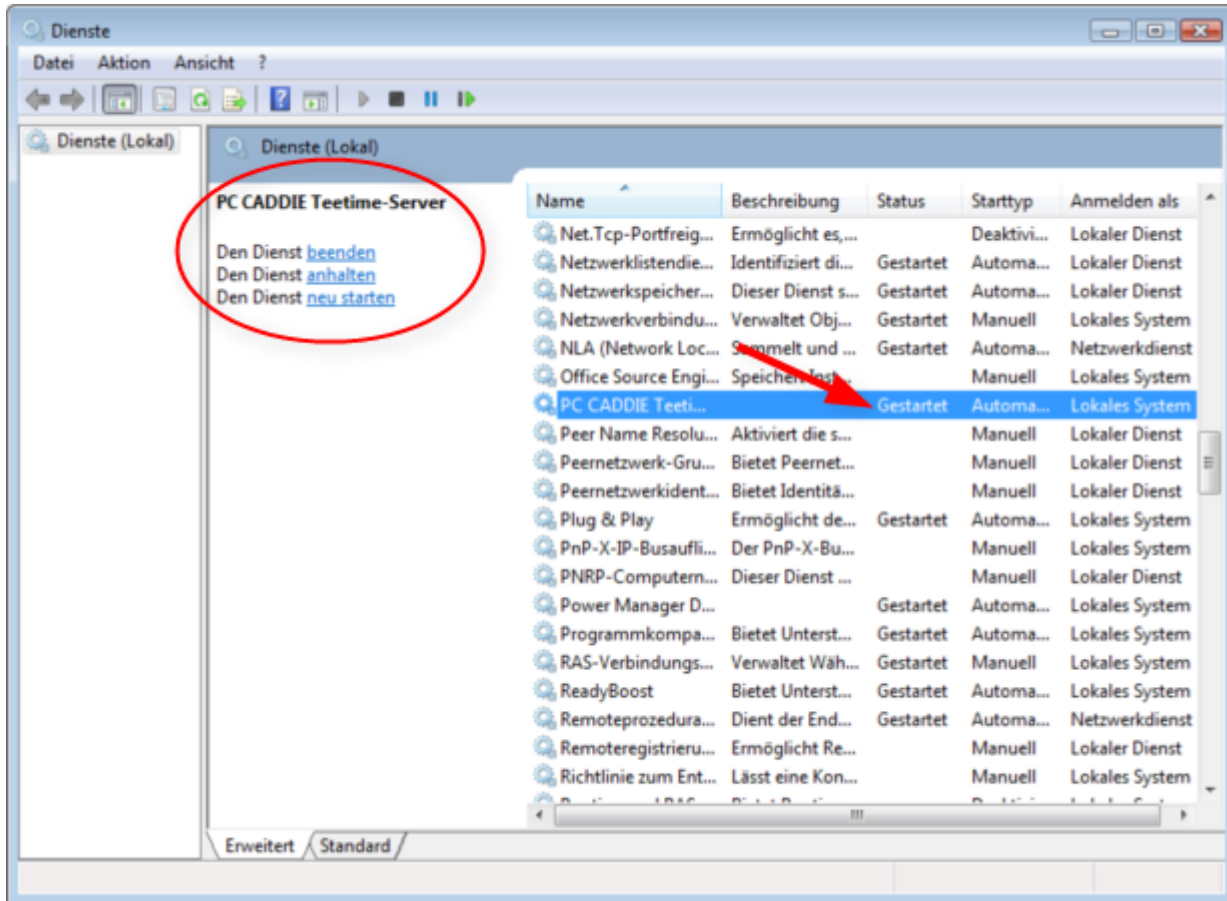


Installed as a service means that the teetimeserver is automatically started when the computer is started. It makes sense to install the service on the server so that online bookings by night owls can also be reliably guaranteed for service reasons.

If you click on the Windows Start button and then on **Execute**, you can enter the word `services.msc`:



Confirm with **OK**, to go to the system services. There you will find a PC CADDIE time server in the alphabetical list, which should of course always be started:



! If PC CADDIE Support installs the service on a Windows 7 computer or on a Windows Server 2008, make sure that PC CADDIE is run as administrator. Please have administrator rights ready for this installation.

No system impairment

! The Teetime server runs in the background, which means that it does not interfere with the system in any way. The server settings are therefore not affected. This information is particularly important for your system administrators.

No contact with the local club system

The error message „**No contact with the local club system**“ is caused by a connection problem between your local server and the Teetime server. The resulting error message looks like this...

...in the PC CADDIE://online module [PC CADDIE://online Teetime/trainer reservation](#):

PC CADDIE://online Teetimes

18 Loch Platz ▼ 05.12.2011 - Montag ▼ Anzeigen

LEIDER GAB ES KEINEN KONTAKT ZUM LOKALEN CLUBSYSTEM!!!

WIR HABEN DEN GOLFCLUB PER EMAIL INFORMIERT.

BITTE VERSUCHEN SIE ES ZU EINEM SPÄTEREN ZEITPUNKT NOCH EINMAL!!!

Haupt-Menü

- » Start
- » Hilfe
- » Kontakt / Support

Besucher-Menü

Bereits registriert?
Bitte loggen Sie sich ein:

E-Mail / Benutzername:

...in the PC CADDIE://online module [PC CADDIE://online Tournament management](#):

Kalender | Startlisten | Ergebnisse | Vorgabe abfragen | Support & Kontakt | DRUCKEN

Angemeldet als: **Timo Tester** [Mein Benutzerkonto | System verlassen]
Heimatclub: GC Tiny (9002 100120)
STV: -5.0 - Club-Status: Mitglied

Turnieranmeldung



Bei Ihrer Anmeldung ist ein Fehler aufgetreten!

Fehlermeldung:

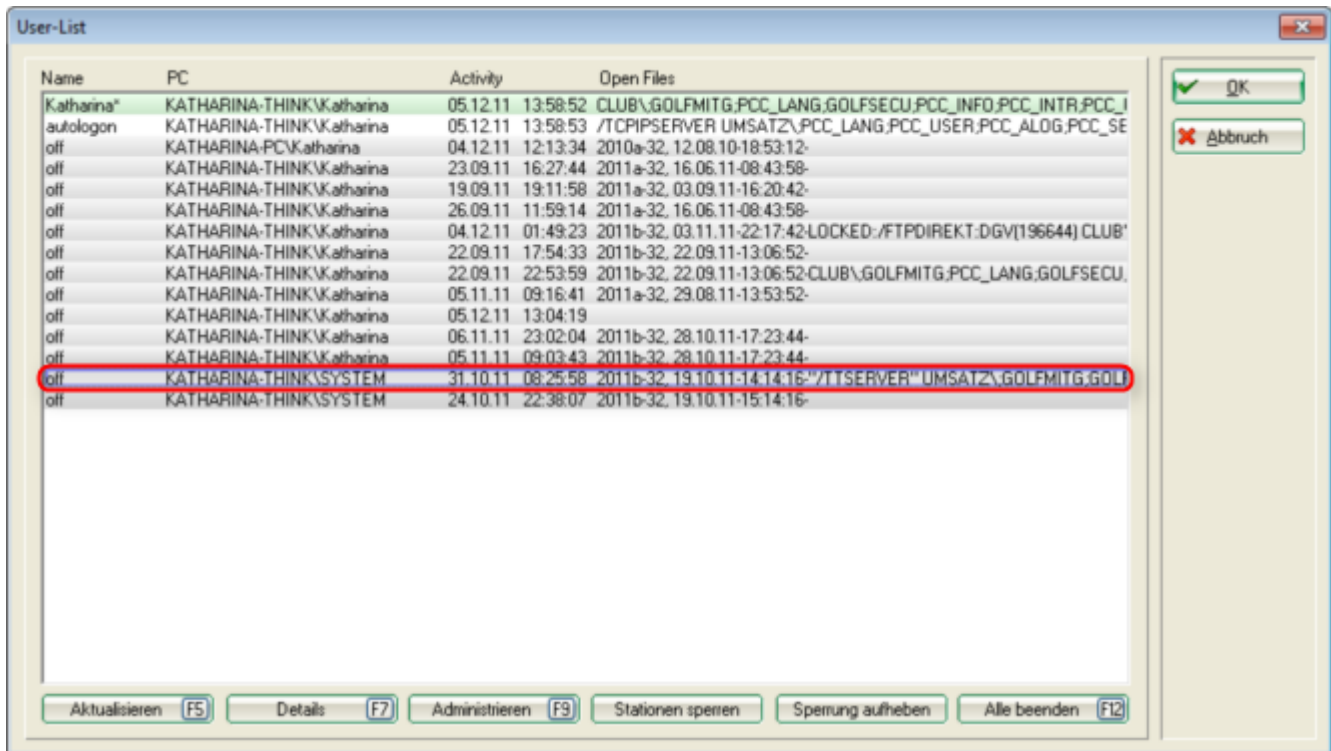
Der Kontakt zum Clubserver ist fehlgeschlagen. Bitte versuchen Sie es zu einem späteren Zeitpunkt noch einmal!

- zurück zum Turnierkalender -

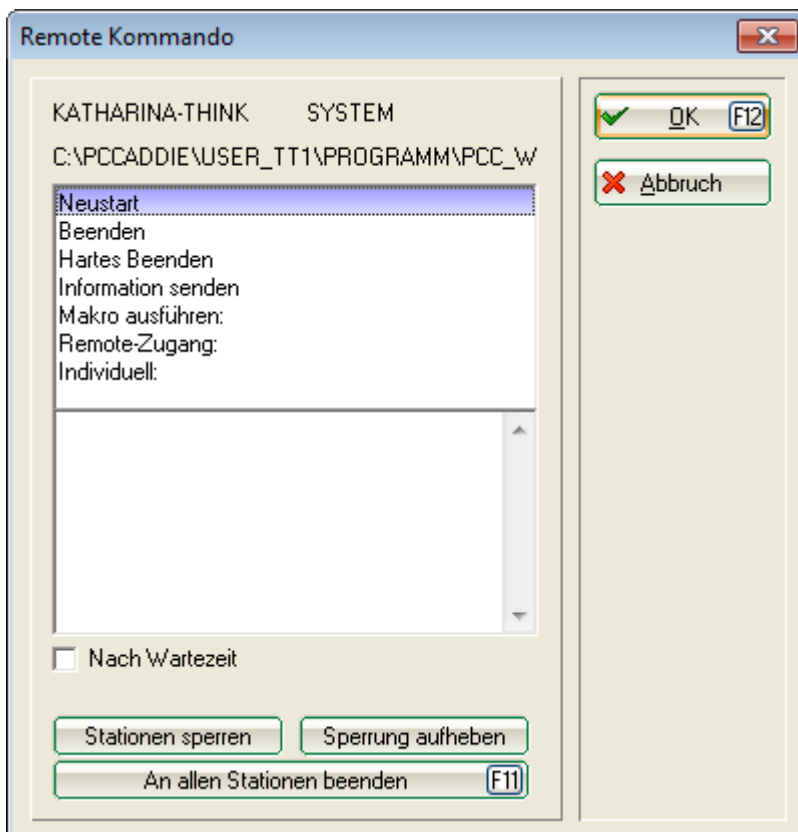


It is not possible to book at the moment. In this case, the Teetime server must be checked.

You can check this in PC CADDIE under **Settings/Macros** the macro „**user**“ can be entered in PC CADDIE under Settings/Macros. This opens the user list:



In the display you can see very quickly that the TT server is offline is offline. Now click on **Administrate** (F9), select the „Restart“ option and confirm with **OK**.



After successfully restarting and updating again by clicking on **Refresh** (F5) (several times if necessary), the TT server should be accessible again as usual:

Name	PC	Activity	Open Files
Katharina*	KATHARINA-THINK\Katharina	05.12.11 14:13:36	CLUB\GOLFMITG.GOLFTURN;GOLFCLUB;GOLFSPIE;PCC_LANG;GOL
autologon	KATHARINA-THINK\Katharina	05.12.11 14:13:34	/TCPIPSEVER\UMSATZ\;PCC_LANG;PCC_USER;PCC_ALOG;PCC_SF
autologon	KATHARINA-THINK\Katharina	05.12.11 14:13:36	/TTSERVER\UMSATZ\;GOLFMITG.GOLFTURN;GOLFCLUB;GOLFBEIT
off	KATHARINA-PC\Katharina	05.12.11 12:13:34	2010a-32, 12.08.10-18:53:12-
off	KATHARINA-THINK\Katharina	04.12.11 01:49:23	2011b-32, 03.11.11-22:17:42-LOCKED-;/FTPDIREKT.DGV[196644] CLUB'
off	KATHARINA-THINK\Katharina	26.09.11 11:59:14	2011a-32, 16.06.11-08:43:58-
off	KATHARINA-THINK\Katharina	23.09.11 16:27:44	2011a-32, 16.06.11-08:43:58-
off	KATHARINA-THINK\Katharina	19.09.11 19:11:58	2011a-32, 03.09.11-16:20:42-
off	KATHARINA-THINK\Katharina	22.09.11 17:54:33	2011b-32, 22.09.11-13:06:52-
off	KATHARINA-THINK\Katharina	22.09.11 22:53:59	2011b-32, 22.09.11-13:06:52-CLUB\GOLFMITG;PCC_LANG;GOLFSECU,
off	KATHARINA-THINK\Katharina	05.11.11 09:16:41	2011a-32, 29.08.11-13:53:52-
off	KATHARINA-THINK\Katharina	06.11.11 23:02:04	2011b-32, 28.10.11-17:23:44-
off	KATHARINA-THINK\Katharina	05.11.11 09:03:43	2011b-32, 28.10.11-17:23:44-
off	KATHARINA-THINK\SYSTEM	31.10.11 08:25:58	2011b-32, 19.10.11-14:14:16-"/TTSERVER" UMSATZ\;GOLFMITG;GOLF
off	KATHARINA-THINK\SYSTEM	24.10.11 22:38:07	2011b-32, 19.10.11-15:14:16-



The online services are fully available again.

TIP The fastest and most precise way to check the TT server is on the main computer or on the server in your company. It would therefore be a great advantage if the server was equipped with a screen and keyboard.



For your [PC CADDIE://online Customer service](#) it is very important that direct access to the server is guaranteed in order to be able to provide rapid assistance.