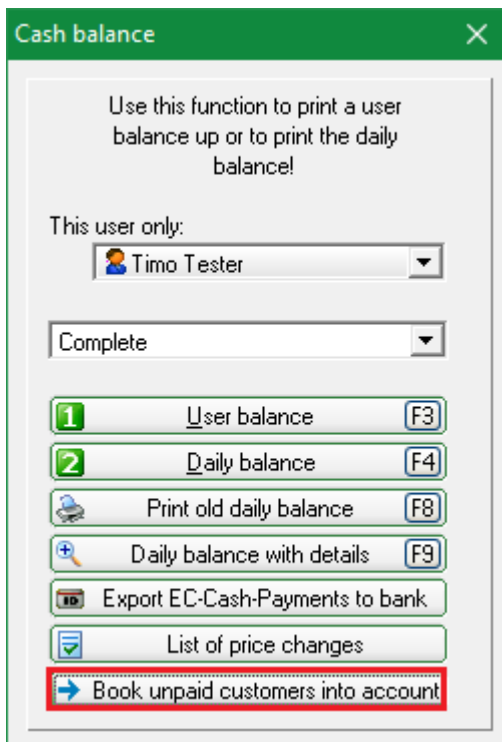
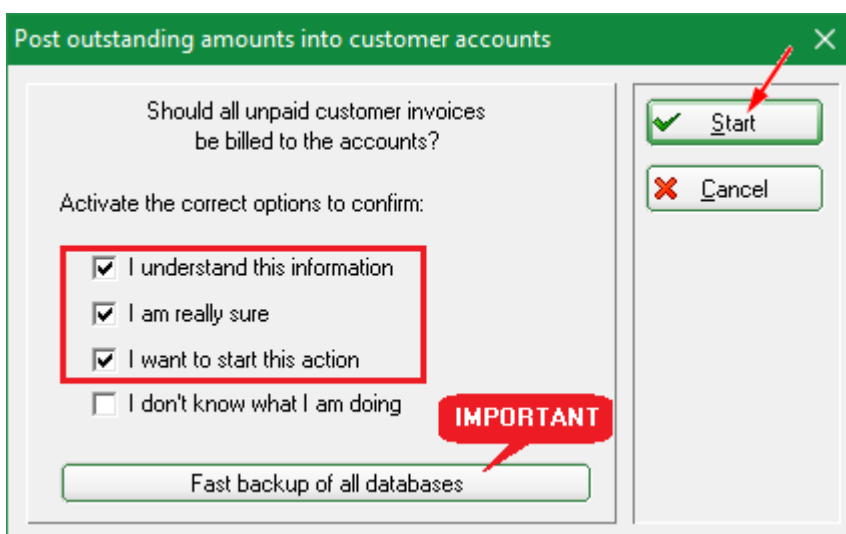



Post open customers to the account

About **Turnover** in the menu bar when you click on **Cash register accounting** you will be taken to the Cash register accounting window. Here you can post all open customers to the account. This is a quick way of posting all open customers at once. This can be very practical, e.g. if you have transferred the entry fees for a tournament to the cash register and not all participants have paid. However, you cannot check each customer individually and detect any errors. detect any errors. You can only do this in the cash register, as you enter each customer individually there.



First create a [Fast data backup](#) . Tick the boxes, these can vary, then start the process.



 If the cash register parameters are set so that only persons with direct debit authorisation can openly post to the account, this process is not possible.