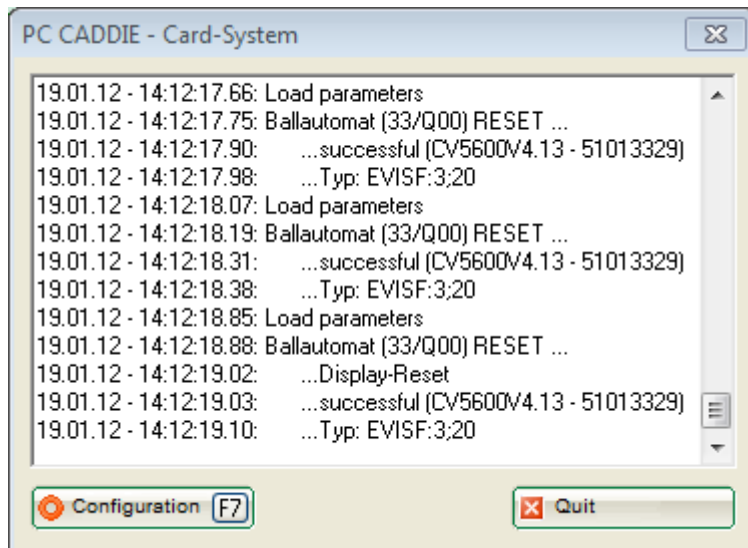


# Start server

You will find this menu item under **Settings/Card system/Start server**. The map server can be started from any workstation. However, it usually runs as a service on the server.



You can no longer start the map server via the button in the menu, but only specifically with the PC Caddie employee account.



Please note that the card server may only be started at one station. You should therefore use the sm macro to check whether the map system is activated in the service manager. If a PC CADDIE.id map server is already running in your network, the following message appears:

