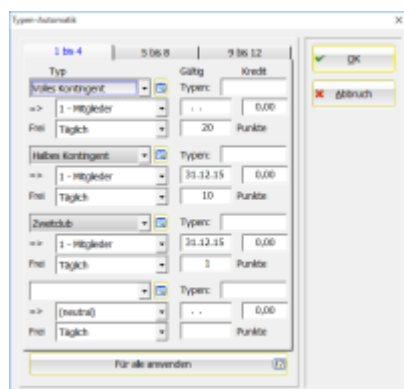


Automate card types

PC CADDIE can automatically assign card types based on groups of people; the corresponding menu item is activated with this special parameter:

CARD_TYPEAUTO	Creates a menu item in the „Card system“ menu to define the automatic assignment
CARD_TYPEAUTOCHECK	Checks the automatic assignment of card types for each action



In addition, the validity period, free points and credit limit can be assigned when defining the automatic assignment. The prices are still defined via the price schemes. It is essential to ensure that a **quick data backup** must be made beforehand.

This function sets the **selected card type** for **ALL persons** contained in the filter.

To delete the assigned special points, the desired person filter must be set and the value -1 entered for the special points. „Apply to all“ then sets the special points to 0.