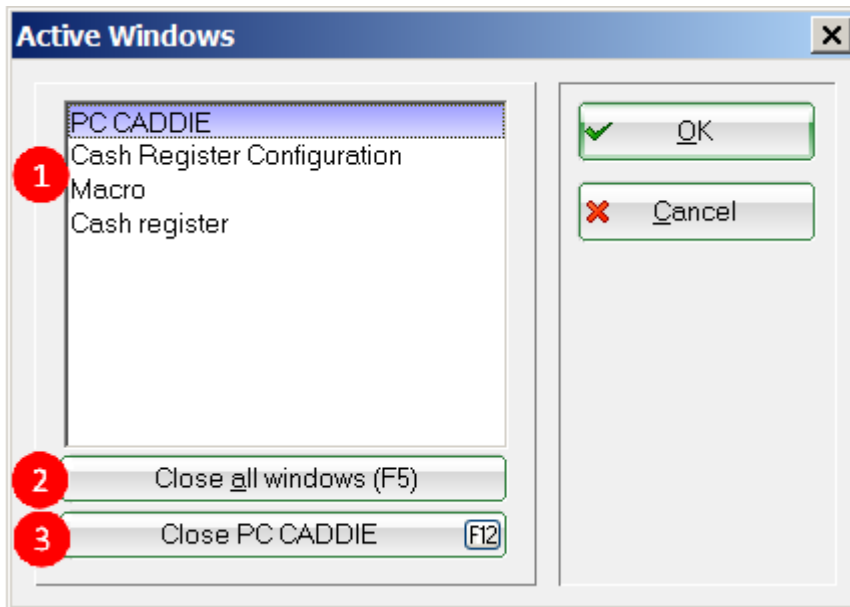


Windows

Under **Settings/Windows** you can get an overview of all active windows:



1. Select the desired window here and confirm with **OK**.
2. Close all windows (F5).
3. The programme can also be closed here (F12).



You also have a good overview of the open windows in the sidebar on the left via the button **Open windows**, where you can switch as required.

Opened windows


PC CADDIE


Cash Register Configuration


Macro


Cash register




 Opened windows


 Shortcuts

 Persons

 HCP Handicaps

 Accounts

 Competitions

 Timetable

 Article